









A beautifully presented and impeccably maintained six bedroom three-storey home, ideally positioned on the edge of the sought-after villages of East Boldon and Cleadon along the ever fashionable Whitburn Road on the edge of Sandpiper View this is a highly regarded modern development comprising executive homes.

Offering an expansive and highly versatile layout across three floors, the property provides up to six bedrooms and three bathrooms. Two of the single bedrooms are currently utilised as home offices, making this an excellent choice for larger families or those who regularly work from home.

The property enjoys a delightful semi-rural setting, overlooking the nearby nature reserve and surrounding fields, and falls within the catchment area for several highly regarded schools. East Boldon Metro Station is just a two-minute walk from the property, providing convenient access to both Newcastle upon Tyne and Sunderland city centres, making it ideal for commuters.

Immaculately presented throughout, the home requires no additional investment. Generous room proportions, low-maintenance gardens, and tasteful neutral décor finished to a high standard combine to create a property ready to move straight into.

MAIN ROOMS AND DIMENSIONS

Ground Floor

Access via Composite entrance door.

Reception Hall



Storage cupboard, stairs to first floor and radiator.

Lounge 10'5" x 16'6"



2x double glazed windows to front and radiator.

Open Plan Kitchen & Dining Room 17'8" x 13'11"



Range of modern high gloss wall and base units with countertops over incorporating 1 1/2 bowl sink and drainer with mixer tap. Integrated double oven, electric hob and extractor, dishwasher, washing machine and fridge freezer. Feature breakfasting island with built in wine fridge. UPVC double glazed Bi-folding doors to rear and radiator.

Cloakroom/WC



Low level WC with concealed cistern, washbasin and radiator.

First Floor Landing



Radiator, storage cupboard and stairs to second floor.

Bedroom 3 10'7" x 13'4"



2x double glazed windows to rear, radiator and built in mirror fronted sliding door wardrobes. Door to en-suite.

En-Suite Shower Room



Low level WC with concealed cistern, washbasin and walk in shower cubicle, chrome heated towel rail.

Bedroom 4 10'0" x 13'0"



2x double glazed windows to front, radiator and built in mirror fronted sliding door wardrobes.

Visit www.peterheron.co.uk or call 0191 510 3323

Tried. Trusted. Recommended. City Branch 20 Fawcett Street Sunderland SR1 1RH Fulwell Branch 15 Sea Road Fulwell Sunderland SR6 9BS

MAIN ROOMS AND DIMENSIONS

Bedroom 5/Office 7'6" x 8'6"



Double glazed window to front and radiator.

Second Floor Landing



Access point to loft and radiator.

En-Suite Shower Room



Low level WC with concealed cistern, washbasin and walk in shower cubicle.

Bathroom 6'9" x 9'6"



Low level WC, washbasin, bath with shower attachment, and walk in shower cubicle, chrome heated towel rail and double glazed window.

Principal Bedroom 17'11" x 10'10" plus 4'2" x 7'11"



2x double glazed windows to front, radiator and built in mirror fronted sliding door wardrobes. Door to en-suite.

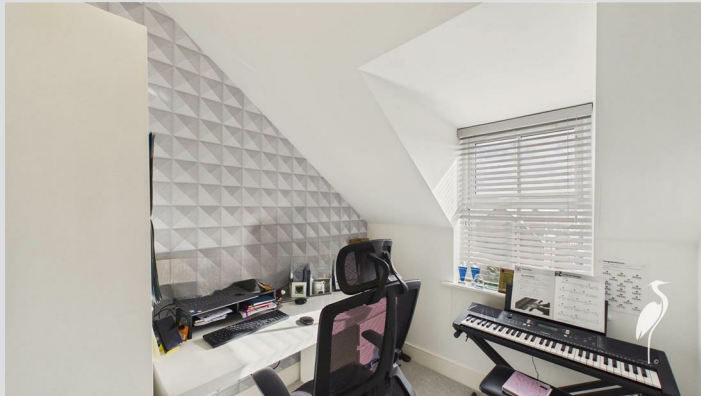
Bedroom 2 10'5" x 12'3"



2x double glazed windows to rear, radiator and built in sliding door wardrobes.

MAIN ROOMS AND DIMENSIONS

Bedroom 6/Office 7'1" x 8'4"



Double glazed window and radiator.

Outside



Garden to the front, whilst to the rear lawned garden with block paved area. Driveway providing off street parking. Detached garage.

Garage 18'0" x 10'6"



Access via up and over shutter door.

Council Tax Band

The Council Tax Band is Band E.

Tenure Freehold

We are advised by the Vendors that the property is Freehold. Any prospective purchaser should clarify this with their Solicitor.

Important Notice - Particulars

Peter Heron Ltd for themselves and for the vendors of this property whose agents they are, give notice that:- The particulars are set out for general guidance only for the intending Purchasers and do not constitute part of an offer or contract. Whilst we endeavour to make our sales particulars accurate and reliable, if there is anything of particular importance which you feel may influence your decision to purchase, please contact the office and we will be pleased to check the information. Do so particularly, if contemplating travelling some distance to view the property. All descriptions, dimensions, references to conditions and necessary permissions for use and occupation and other details are given in good faith, and are believed to be

correct, however any intending purchasers should not rely on them that statements are representations of fact, but must satisfy themselves by inspection or otherwise as to the correctness of each of them. Independent property size verification is recommended.

Lease details, service charges and ground rent (where applicable) are given as a guide only and should be checked and confirmed by your Solicitor prior to exchange of contracts. No person in the employment of Peter Heron Ltd has any authority to make or give any representation or warranty whatever in relation to this property or these particulars, nor to enter into any contract on behalf of Peter Heron Ltd, nor into any contract on behalf of the Vendor. The copyright of all details and photographs remain exclusive to Peter Heron Ltd.

Please note that in the event the purchaser uses the services of Peter Heron Conveyancing in the purchase of their home, Peter Heron Ltd will be paid a completion commission of £300.00 by Movewithus Ltd.

Sea Road Viewings

To arrange an appointment to view this property please contact our Sea Road branch on 0191 510 6116 or book viewing online at peterheron.co.uk

Opening Times

Monday to Friday 9.00am - 5.00pm Saturday 9.00am - 12noon

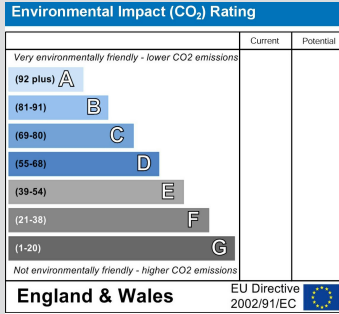
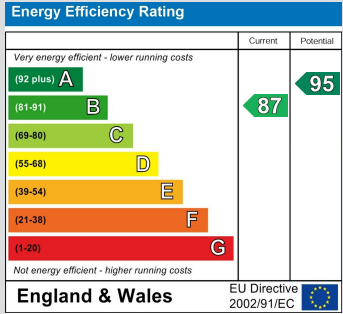
Ombudsman

Peter Heron Estate Agents are members of The Property Ombudsman and subscribe to The Property Ombudsman Code of Practice.

Visit www.peterheron.co.uk or call 0191 510 3323

Tried. Trusted. Recommended. City Branch 20 Fawcett Street Sunderland SR1 1RH Fulwell Branch 15 Sea Road Fulwell Sunderland SR6 9BS

MAIN ROOMS AND DIMENSIONS



Visit www.peterheron.co.uk or call **0191 510 3323**

Tried. Trusted. Recommended. City Branch 20 Fawcett Street Sunderland SR1 1RH Fulwell Branch 15 Sea Road Fulwell Sunderland SR6 9BS



Ground Floor



First Floor



Second Floor

Approximate total area⁽¹⁾

143.9 m²

1548 ft²

Reduced headroom

2.8 m²

30 ft²

(1) Excluding balconies and terraces

Reduced headroom

Below 1.5 m/5 ft

Calculations reference the RICS IPMS 3C standard. Measurements are approximate and not to scale. This floor plan is intended for illustration only.

GIRAFFE360

